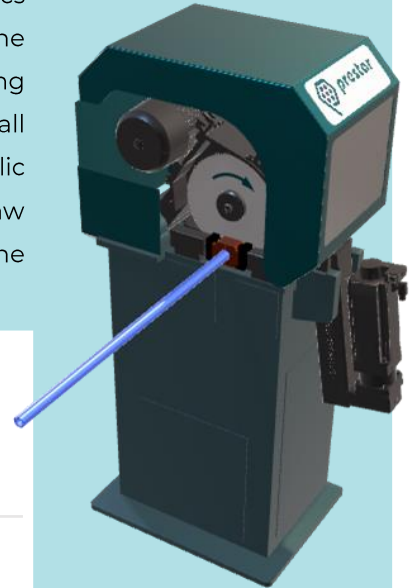


CIRCULAR SAWS



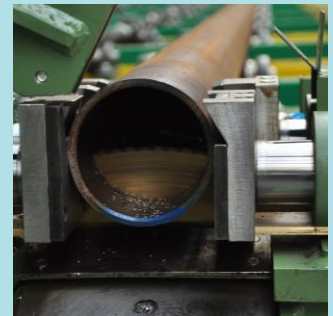
Disc saws are designed to cut tubes and bars to precise lengths. The range of tubes is from 6 to 140 mm. Cutting with HSS discs or discs with HM inserts. A feed of the dividing disc according to the requirement of the production technology. The force of the clamping jaws is by hydraulics and is infinitely adjustable according to the wall thickness of the tubes. The feed into the cut is provided by a hydraulic cylinder or servo drive with variable tube cutting speed. The saw always operates in automatic or manual mode and is controlled by the control panel.



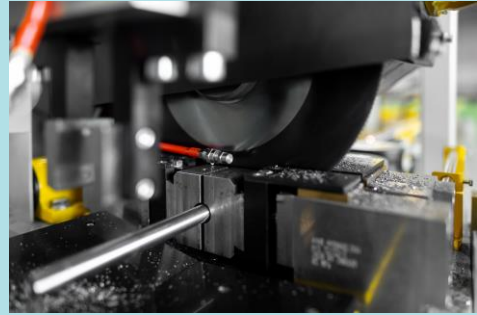
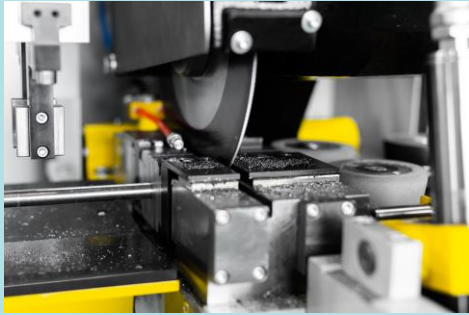
Technical parameters of the machine

Diameter of split tubes or rods	6 - 140 mm
Cutting lengths	10 - 21 000 mm
Cutting accuracy	+ - 0,5 mm/ 6 m length
Cutting cycle	from 5 sec/piece

- Optimization of the blade feed with respect to the diameter and wall thickness of the tube
- Disc cooling using a venturi tube
- Deployment of up to 4 saws in the axis for simultaneous cutting of one pipe or bar into
- input
- Continuous cleaning and lubrication of the blade
- Blade chip removal after cutting
- Covering the saw
- Guiding stones for HM saw blades



CIRCULAR SAWS



Other machine equipment

- To clean up the ends after cutting, the circular saw can be supplemented by brushing or beveling the ends of the pipes
- Saw travel for setting the cut length or laser length measurement
- Collection conveyor under the saw for scraps and chips
- Waste collection containers suspended from the saw
- Collection of production parameters with automatic storage, display, and export of data
- Extended service with the option to display instructions, service manuals and other necessary documentation on HMI machines with the aim of minimizing service times

